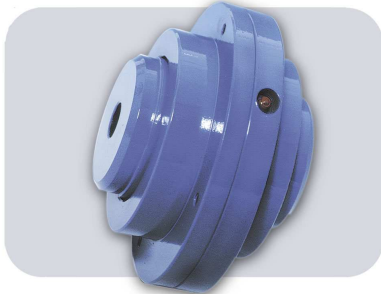
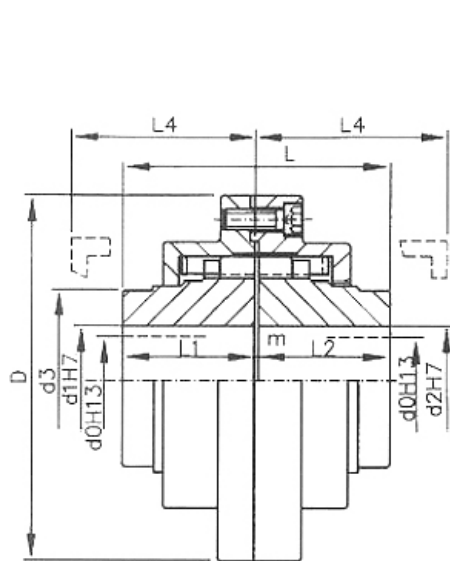


Clutch VPS (flexible)

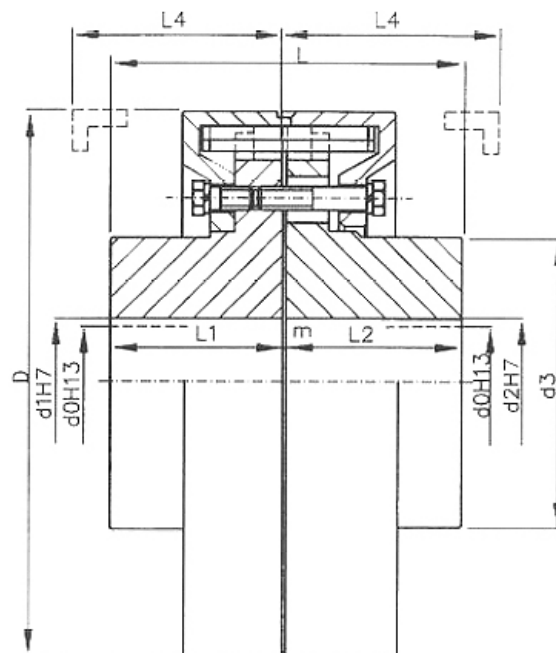


The VPS coupling consists from two charges, from the springs and from the easy withdrawable two-part cover that is fitted on or centred on the one from charges and creates the tank for the lubricant. The periphery of the disk is equipped with the longitudinal slots, in which the snaky wound steel spring is inserted that transmits the peripheral force. The couplings to the size VPS 1.5 can be executed with the brake wheel. This design must be agreed with the manufacturer in advance. The couplings of the size 40 and greater are not used often and, therefore, the manufacturer discharges their orders individually including determination of the maximum revolutions. By the sizes 40 and 50 the rough-drilling nor the charge diameter are not, therefore, determined in advance. The customer can to take out

them so, that the diameter d_3/d equals about 1.7. Final drilling must not at the same time exceed the maximum values shown in the table. By the sizes 90 and 120 is not standardised nor the charge length, only the discs, covers and springs dimensions. The couplings charges are manufactured according to the agreement of the customer with the manufacturer. The coupling are not supplied with the store rough-drilling d_{0H13} according to the table or after the agreement with the hole machined for requested drilling including the slot for the spring according to ČSN.



SIZE 0,01 – 1



FROM SIZE 1,5

Clutch VPS

Size	0,01			0,03			0,08			0,15			0,3			0,5			0,8			1			1,5			2			3			4			5			6																																
Main Technical Data																																																																								
Nominal torque (Nm)	71			224			560			1000			2240			3550			5600			7100			11200			14000			22400			28000			35500			45000																																
Speed (min ⁻¹)	4500			3600			3000			2300			2250			2000			1700			1450			1300			1150			1150			960			920			800																																
Permissible deviation of alignment (mm)	0,18												0,2												0,25																																															
Permissible deviation of parallelism (mm)	0,2												0,25												0,3																																															
Weight kg	4,5			9,7			18,5			34,5			47,5			67			100			149			158			164			190			195			200			235			250			305			312			314			422			440			433			510			515			525		
Dimensions (mm)																																																																								
D	125			160			192			250			255			290			340			390			420			472			472			580			605			686																																
d1 max, d2 max, H7	40			50			65			75			85			100			125			130			110			140			105			125			150			115			160			130			165			190			130			175			200			160			200			230		
d0 H13	15			20			25			30			35			40			50			70			75			110			75			105			125			75			115			75			130			165			75			130			175			90			160			200		
d3	60			82			110			130			145			170			215			220			175			220			170			200			230			180			250			200			260			290			200			275			310			250			310			360		
m	2			2			2			2			3			2			3			3			3			3			3			3			3			3			3			3			3			3			3																	
L1, L2	45			50			70			80			90			100			115			130			140			150			155			180			190			190																																
L	92			102			142			162			183			202			233			263			282			303			313			363			383			383																																
L4	65			85			85			85			135			150			150			150			180			180			225			180			225			230																																

Size	7						10						15						22						30						40			50			90			120																													
Main Technical Data																																																																					
Nominal torque (Nm)	50000						71000						112000						160000						224000						280000			355000			630000			900000																													
Speed (min ⁻¹)	800						720						600						530						460																																												
Permissible deviation of alignment (mm)	0,25												0,3												0,5																																												
Permissible deviation of parallelism (mm)	0,3												0,4												0,6																																												
Weight kg	570			620			663			670			715			745			805			920			1040			1170			1275			1260			1340			1490			1470			1760			1820			2010			2085			2320			2675			3085					
Dimensions (mm)																																																																					
D	690						780						920						1045						1210						1396			1556			1640			1835																													
d1 max, d2 max, H7	150			200			250			155			200			235			280			210			270			330			230			250			290			350			230			270			325			370			430			480			530			550			600		
d0 H13	120			150			200			120			155			200			235			150			210			270			170			230			250			290			350			180			230			270			325			370											
d3	230			310			390			240			310			370			440			320			420			520			360			390			450			550			580			360			420			520			580			675											
m	3						3						4						4						3						3			3																																			
L1, L2	220						230						250						255						300						330			380																																			
L	443						463						504						514						603						663			763																																			
L4	230						230						230						280						280						280			530																																			