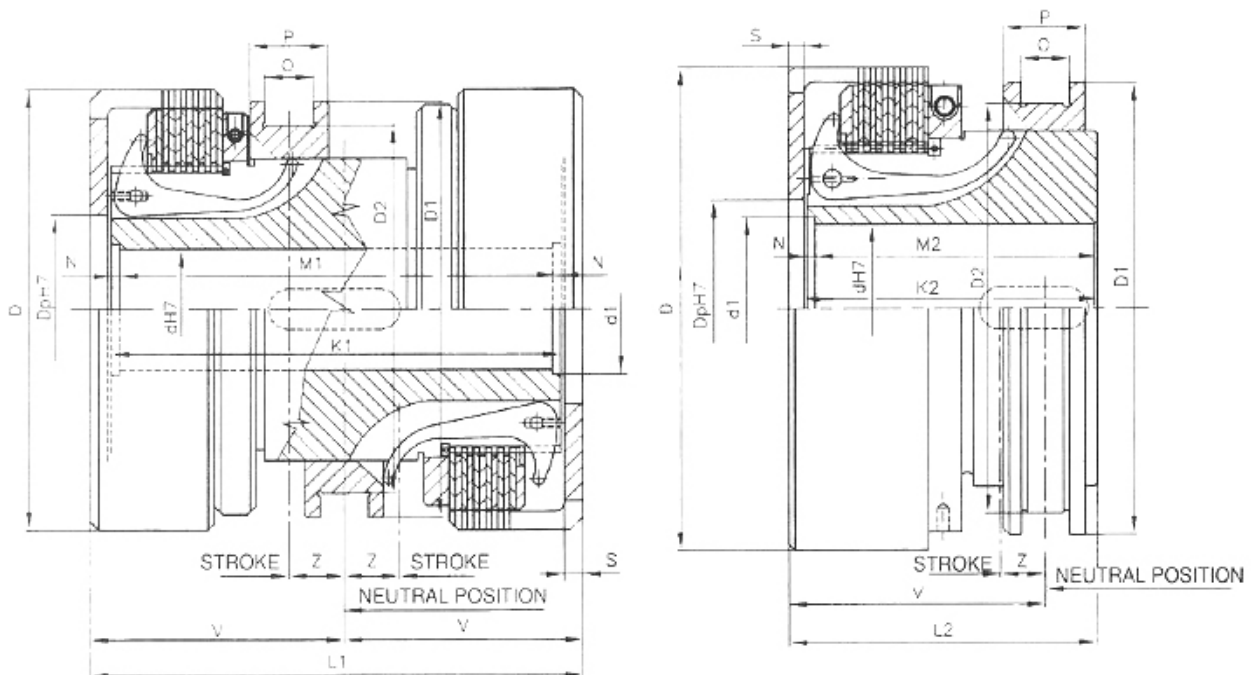


## Clutch LSV (mechanically controlled)



COUPLINGS / DOUBLE-COUPLINGS LSV can be switched in and switched out at full load of the double-coupling. It is possible to reverse for usual circumstances at lower revolutions and at lower output, at the same time the time pause of the shifting device at neutral position must be observed (about 6 seconds). In extraordinary cases only so-called breakdown reversing, i.e. shifting of the starting lever from one extreme position to second one at maximum revolutions and output. COUPLINGS / DOUBLE-COUPLINGS LSV are supplied in 8 sizes. Technical and dimensioned parameters are shown at the table. By the sizes 2.5; 4; 63; 125 we supply the couplings with the full shell. The couplings can work at temperatures maximum 120 oC inside of gearboxes. They

are lubricated and cooled by the oil that lubricates also the gear set.



## Clutch LSV

Size		2,5	4	10	20	32	63	90	125
<b>Main Technical Data</b>									
Nominal torque Nm		25	40	100	200	320	630	900	1250
Max. speed in oil		3000	3000	3000	3000	2800	2500	2300	2000
Engaging force N		100	120	290	400	500	650	950	1250
Weight (kg)	single-clutch	1,5	2	5	7,5	12	16	23	32
	double-clutch	2,6	3,2	8,5	12,6	20	29	39	52
<b>Dimensions</b>									
D		82	93	120	147	162	195	215	250
Dp H7	min	40	45	40	70	80	100	110	120
	max	50	60	80	100	110	150	160	180
D1		65	75	115	140	150	150	165	190
D2		55	60	102	125	135	135	145	165
dH7	min	15	18	20	25	30	40	48	50
	max	30	35	38	45	55	65	75	85
d1		-	-	40	45	52	57	70	76
L1		112	114	140	160	170	190	220	240
L2		67	70	87	100	105	132	131	140
K1		100	100	126	146	157	177	203	223
K2		60	63	80	93	98	125	122	131
M1		-	-	119	139	150	172	194	215
M2		-	-	80	89,5	94,5	123	118	127
A		-	-	3,5	3,5	3,5	2,5	4,5	4
O H8		10	10	10	16	16	18	18	22
P		17	17	18	26	26	30	30	35
S		6	6	6	6	6	6	8	8
V		57	57	70	80	85	95	110	120
Z		8,5	8,5	10	14	14	16	18	20