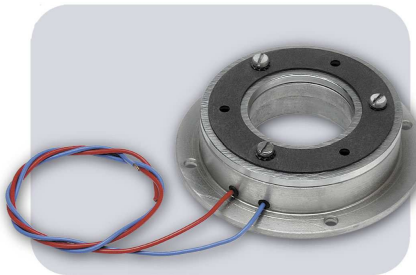
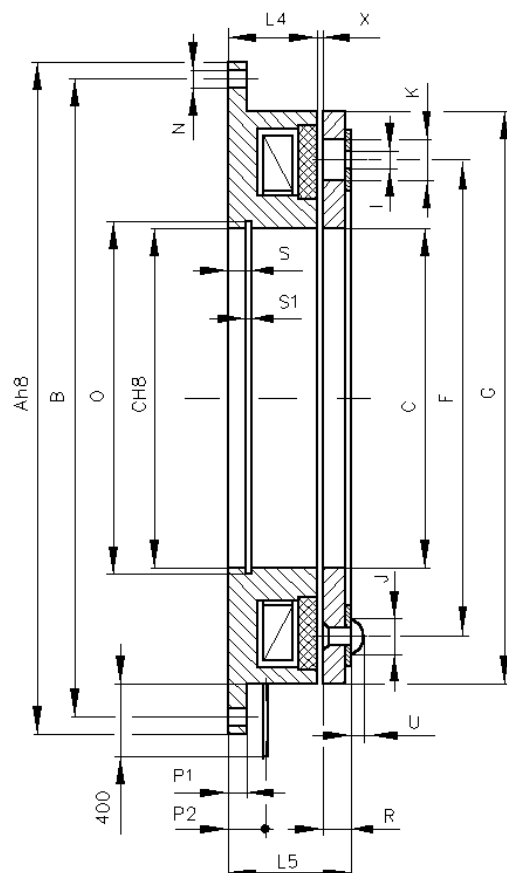


Bra EKP (discs)



The EKP brake consists from the driven part and the fast magnet body. The driven part is created by the anchor with riveted on profile spring. In the spring there are executed 3 holes for gripping on the driven part of the equipment. The spring attends after the throwing out of the brake to the separation of the anchor from the magnet body and ensures its position in thrown out condition. In the fast magnet body the exciting coil for control of the direct current voltage 24 V or according to the agreement for other voltage is casted. The controlling voltage is supplied to the free conductors of the magnet body. For improvement of the friction qualities there is placed in face of the magnet body the asbestosless friction material. In the flange 4 holes to the gripping to immovable machine part are executed.

The EKP brake is not adjusted. The air gap between the anchor and magnet body must be ensured by the construction of following up parts of the equipment. It has almost no residual moment. In switched off condition is worn-out and it does not run hot. Therefore, it can run for unlimited time in thrown out condition.



Brake EKP

Size		3	4	6,3	10	16	25
Main Technical Data							
Nominal torque Mn		30	40	63	100	160	250
Static torque Mmax		36	48	75	120	185	290
Coil at 20°C	Voltage (V)	24	24	24	24	24	24
	Current (A)	0,74	0,87	1,02	1,39	1,46	1,79
	Input (W)	17,8	21	24,7	33,4	35	43
Max. speed		3000	3000	3000	2600	2200	1800
Inertia moment of cover (kgm ²)			0,001	0,0021	0,0028	0,0065	0,0013
Weight		1,35	1,55	2,3	3,5	5	7,3
Dimension (mm)							
A		125	144	158	182	210	235
B		112	132	145	166	195	218
C		52	55	62	75	90	100
F		76	93	104	112	134	150
G		100	119	132	149	178	200
Numer x l		3 x 5.1	3 x 5.1	3 x 6.1	3 x 8.1	3 x 8.1	3 x 10.1
J		8,5	8,5	10	13	13	16
K		11,5	11,5	15	20	20	25
Number x N		4 x 6,5	4 x 6.5	4 x 6.5	4 x 8.5	4 x 8.5	4 x 8.5
O		55	58	65	78	93,5	103,5
L5		28	29,5	32	35,5	41	48,1
L4		22	22	24	26	30	36
P1		4	3	4	4	5	5
P2		8	7	8	8	9	10
R		5,8	7,2	7,7	9,2	10,7	11,7
S		5	5,15	6,15	6,65	7,15	7,15
S1		2,15	2,15	2,15	2,65	3,15	3,15
U		4,3	4,5	5,4	6,2	6,2	7
X		0,2	0,3	0,3	0,3	0,3	0,4